

GURUKUL HEIGHTS



DEVELOPED BY:
GURUKUL HOMES PVT LTD

Ambassador Apartment,
2nd Floor, Suite no. 22,
61A, Park Street, Kolkata,
West Bengal- 700016.

Call Us +91 9088834008/
+91 8017882060

✉ | info@gurukulhomes.com

HIRA REG. -HIRA/P/NOR/2020/000886

Luxurious

Residential Property



ABOUT US

Established with a vision of providing expert real estate solutions across a range of sectors, Gurukul Heights is the real estate venture of Gurukul Group. All the projects are designed with the highest quality standards, keeping in mind the modernity and urban lifestyles. A relationship of trust is the core value on which the foundation of 'Gurukul Heights' is built.

Epitomizing a perfect blend of contemporary design and quality construction, 'Gurukul Heights' is an integrated residential tower located in New Town Kolkata. Elegantly crafted apartments equipped with modern amenities and impressive features make it a perfect dream home.

LIVE THE GOOD LIFE



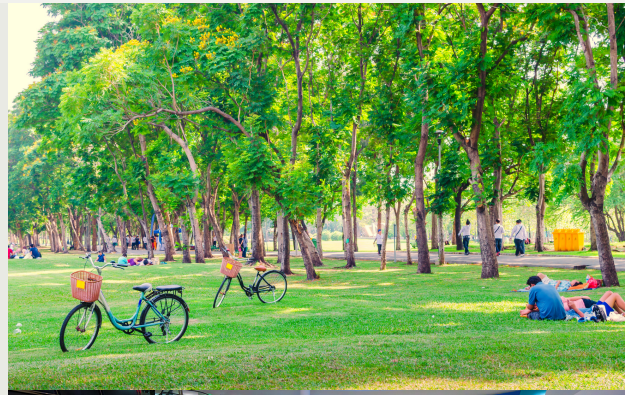
*Welcome to
blissful living!*

*The perfect place to be at peace
with yourself and with those
about whom you care the most.
Surrounded by amenities to
make every moment a pleasure
to live and enjoy life.*

A LOCATION THAT SPEAKS FOR ITSELF!

Gurukul Heights is advantageously located in New Town near Unitech Infospace Gate No.1. Gurukul Heights offers homes that have been planned and developed to facilitate ample sunshine and pleasant breeze in all the corners.

It is close to the market, hospital, and many educational institutions and bound to please your expectations. It is near all major IT campuses, yet miles away from the madness, In addition to its excellent location, Gurukul Heights is minutes away from places like Aquatica, Eco Park, City Centre II, etc. Also within close proximity, you can find various shopping malls and convenience stores



Your neighborhood places needs & wants within easy reach, for every member of your family.



5 **Hospitals** around your home



4 **Shopping Malls** around your home



6 **Parks** around your home



3 **Grocery Stores** around your home



5 **ATMs** around your home



FEATURES THAT
REDEFINE
MODERN LIVING





Let your mind bask
in serenity.

PRIME FEATURES

Lifestyle spread across 1.15
Arces (Approx)

3 Magnificent Towers with
Opened & Covered Parking +
G+9 Storeys

Lavish 2 & 3 BHK Residences

Designer Landscape
Garden

24 Hrs Security

24 Hrs. Water Supply

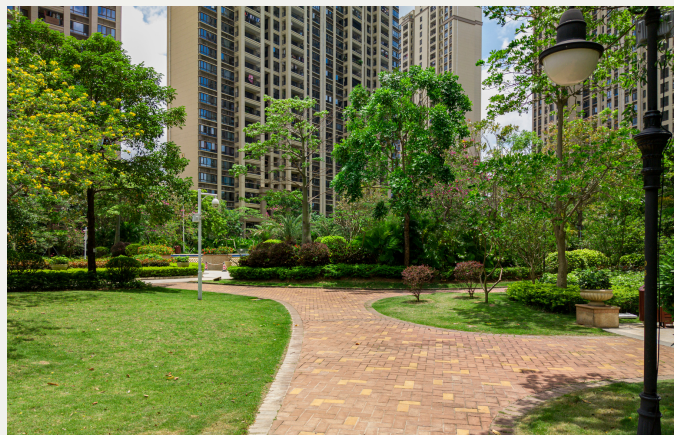
Association Room/Community
Hall

Intercom | CCTV | Generator

Lift in each tower of reputed
make

Power back-up Generator

Water Treatment Plant





Project Specifications

Tower Features

Foundation: RCC Foundation resting on cast-in-situ reinforced concrete bored piles complying with relevant IS Code

Structure Framework: Earthquake Resistant RCC framed structure complying with relevant IS Code

Common Roof: RCC roof

Finishing on Wall: Wall Plaster of Paris / AAC Blocks Surface

Other Facilities:

- 24 Hrs Water Supply
- 24*7 Generator / Power Backup for all common areas & services
- Generator / Power Backup for Flats
- Service Toilets for Housekeeping, Facility Management, Staff etc.



Ground Floor Lobby: Dedicated Ground Floor Lobby for each block with Flooring of Vitrified Tiles

Staircase & Typical Floor Lobby:

- **Staircases:** Stairs laid with tiles
- **Lobby Floor:** Vitrified Tiles in Floor



Car Parking: Opened & Covered Car Parking in Ground Floor with Tiles / Pavers

Lift: Two Lifts in Each Tower

Common Area: Adequate LED Illumination in all Lobbies, Staircases & Common Areas



Security:

- CCTV with Central Security Surveillance with Well trained Security Personnel at Strategic Points
- Intercom Connectivity within Intra Flats, Tower Ground Floor Lobby
- Modern Residential Fire Fighting System as per norms

FLAT FEATURES

Balcony: M.S Railing with Exterior Grade Paint Finished.

Door:

Door Frame: Made of Treated Wood

Main Door: Flush Door with Lock & Handle

Internal Door: Flush Door

Windows: Standard Powder Coated Aluminium Section / UPVC Window Shutters with glass glazing

Lightening Protection: As per compliance

Electrical

- Concealed Copper Wiring with Modular Switches.
- AC Points in all Bedrooms.
- Electrical Points in all Bedroom, Living /Dining, Kitchen & Toilets with Protective MCB's.
- Door Bell Point at the main entrance door.
- Telephone Point in Master Bedroom.
- TV points in Master Bedroom & Living / Dining.
- Provision for Electric Point for Washing Machine.



A SOULFUL home is
where generations
live together.

KITCHEN

- Granite Platform
- Flooring – Vitrified Tiles
- Stainless Steel Sink
- Tiles up to 2 ft above the Counter / Platform
- Electric Points for Refrigerator, Water Filter & Microwave.



FLOORING

Bedroom / Living / Dining Room
– Vitrified Tiles with Skirting

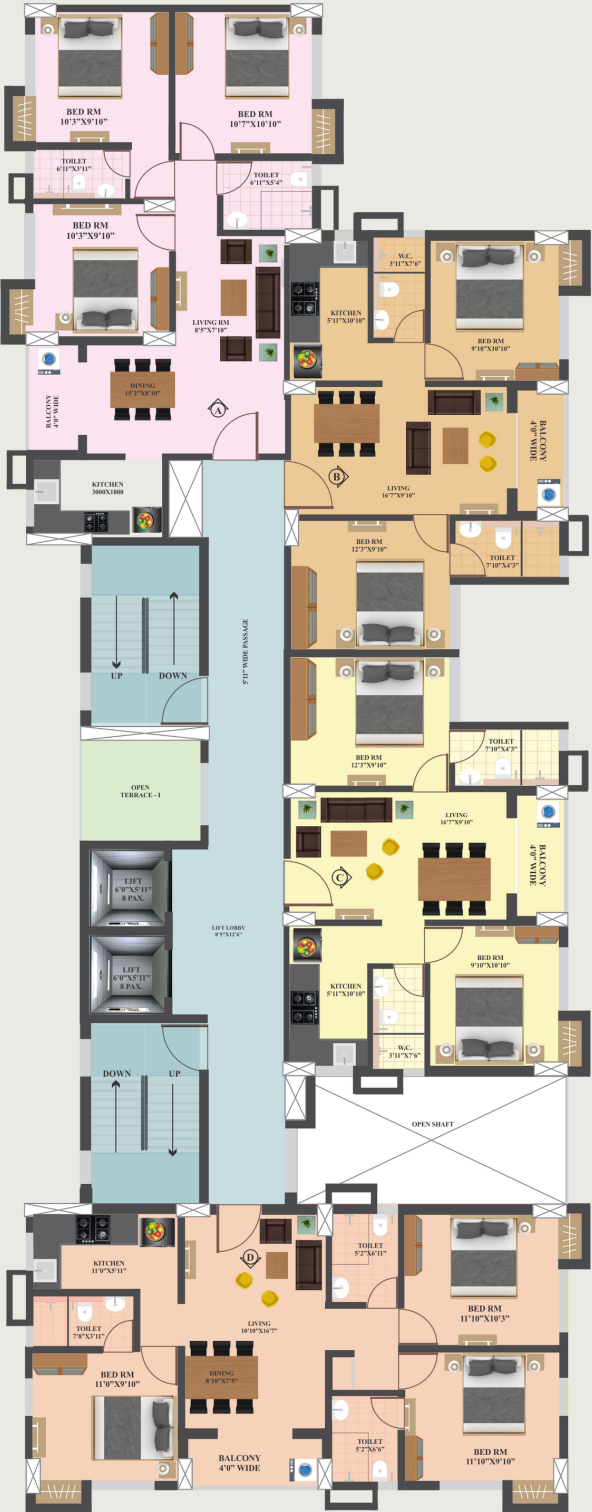
WATER PROOFING

Floors of Kitchen & Bathroom



TOILET

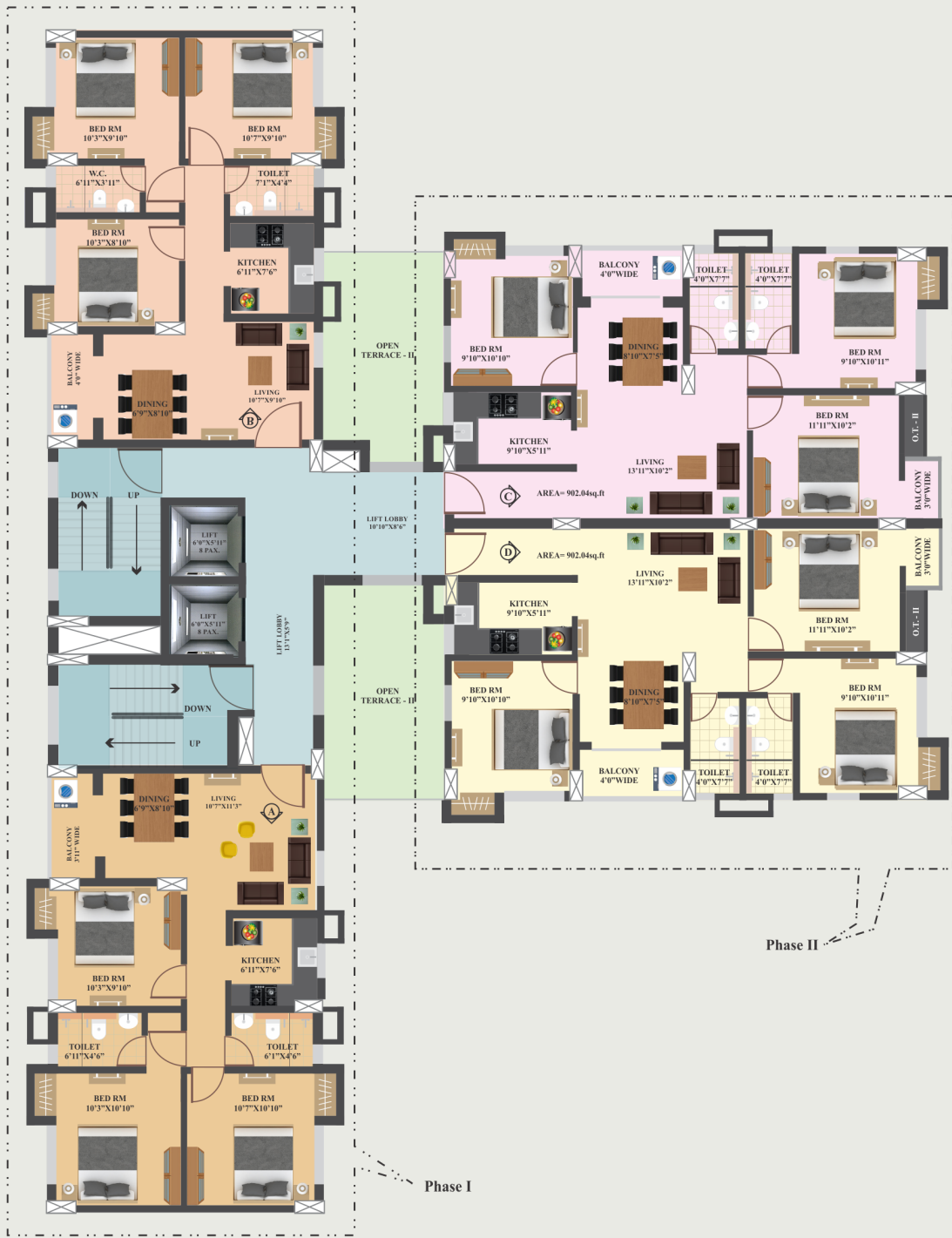
- Anti-Skid Ceramic Tiles for Flooring
- Wall tiles up to door heights
- White Sanitary Ware of Reputed Brand
- CP Fittings & Porcelain fixtures
- Electrical Points for Geyser & Exhaust Fan
- Plumbing provision for Hot / Cold water line



TOWER-1 (PHASE-I)

FLOOR	FLATS	FLAT TYPE	NO. OF FLATS	CARPET AREA		BUILTUP AREA		OPEN TERRACE IN 2ND FLOOR ONLY IN SQ. FT
				AREA IN SQ. FT	AREA IN SQ. FT	AREA IN SQ. FT	AREA IN SQ. FT	
1ST TO 9TH	A	3BHK	4	67.02	721.40	77.61	835.39	NA
	B	2BHK		52.04	560.16	61.09	657.57	
	C	2BHK		52.04	560.16	61.47	661.66	
	D	3BHK		73.64	792.66	86.04	926.13	

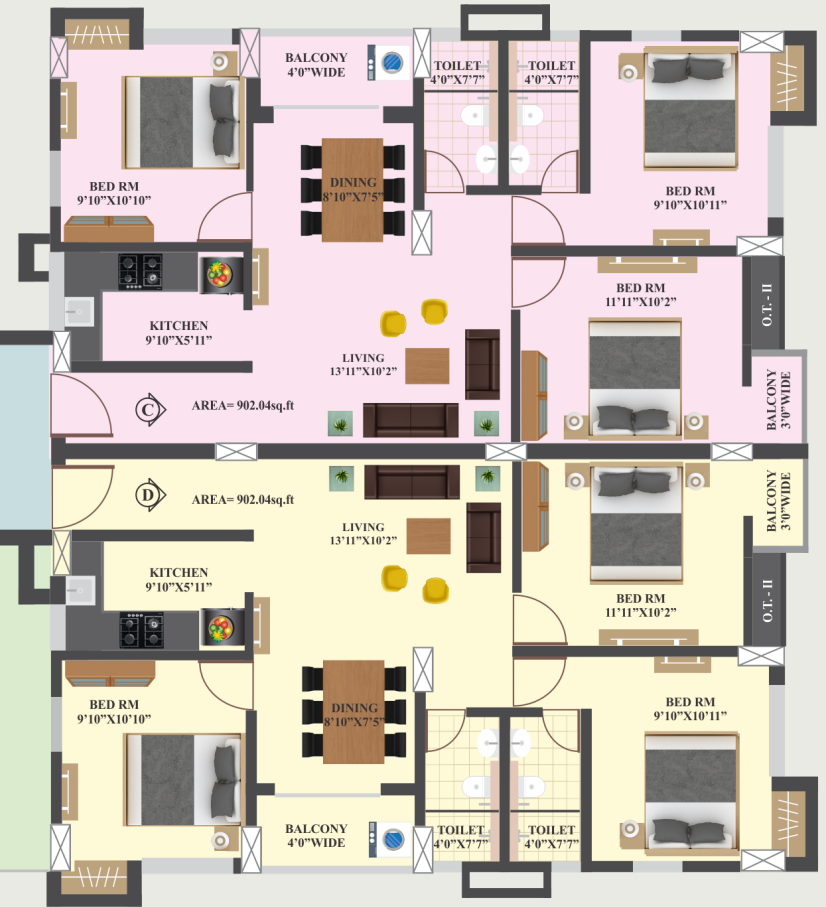
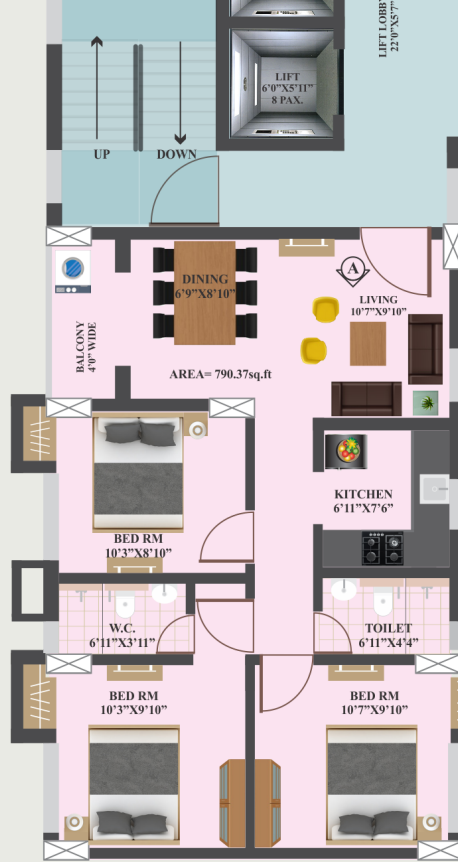
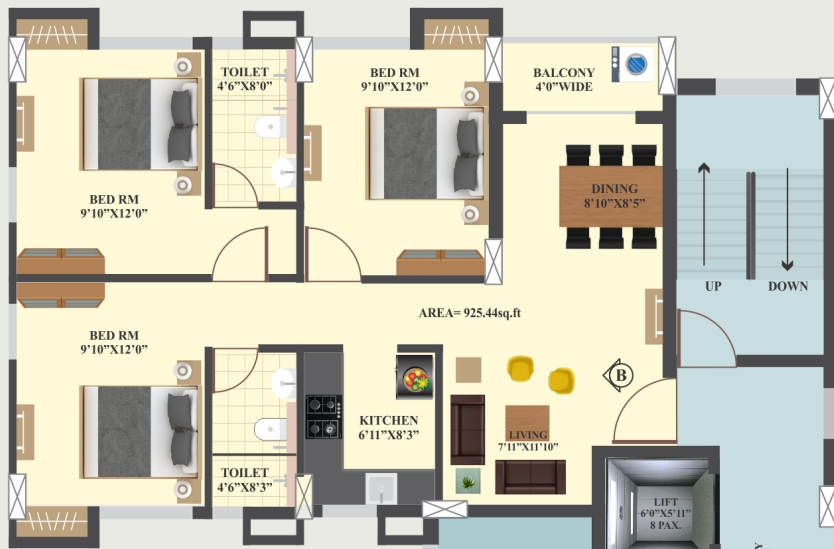




TOWER-2 (PHASE-I&II)

FLOOR	FLATS	FLAT TYPE	NO. OF FLATS	CARPET AREA		BUILTUP AREA		OPEN TERRACE IN 2ND FLOOR ONLY
				AREA IN SQ. M	AREA IN SQ. FT	AREA IN SQ. M	AREA IN SQ. FT	
1ST	A	3BHK	1	67.87	730.55	78.91	849.39	
2ND TO 9TH	A	3BHK	4	67.87	730.55	78.91	849.39	
	B	3BHK		62.80	675.98	73.53	791.48	79.22
2ND TO 9TH	C	3BHK	2	72.14	776.51	83.80	902.02	80.62
	D	3BHK		72.14	776.51	83.80	902.02	172.76





TOWER-3 (PHASE-II)

FLOOR	FLATS	FLAT TYPE	NO. OF FLATS	CARPET AREA		BUILTUP AREA		OPEN TERRACE IN 2ND FLOOR ONLY IN SQFT
				AREA IN SQ. M	AREA IN SQ. FT	AREA IN SQ. M	AREA IN SQ. FT	
1ST	B	3BHK	2	74.68	803.86	85.98	925.49	
	C	3BHK		72.14	776.51	83.96	903.75	
2ND TO 9TH	A	3BHK	4	62.70	674.90	73.43	790.40	86.38
	B	3BHK		74.68	803.86	85.98	925.49	
	C	3BHK		72.14	776.51	83.80	902.02	
	D	3BHK		72.14	776.51	83.80	902.02	86.38



First Floor Plan



Master Layout



LOCATION MAP



Mouza: Chakpachuria, J.L. No. 33, Patharghata Gram Panchayat, Police Station: Rajarhat now under Police Station: New Town, District of 24 Parganas (North), Near Unitech/Condor Gate- 1



Gurukul Lakeview Canal Road, Kolkata



Gurukul Grandeur Hazra Road, Kolkata



Gurukul Grande New Town, Kolkata
(Phase I, II, III, IV)



Panchawati Residency Barbil, Odisha



Pearl Heights Rourkela

A NICHE REPUTATION

Gurukul Homes Pvt. Ltd. is engaged in Real Estate, Construction & offloading of residential and commercial complexes in the state of Odisha since 2007.

The Company first ventured with **PANCHAWATI RESIDENCY**, a multi-storied apartment complex comprising of 60 flats in Barbil (District: Keonjhar, Odisha).

Within a short span **SHREE NIKETAN**, a consortium of 55 flats considered by many as an aesthetic marvel, was developed right in the heart of Barbil, in 2009.

The following year **JODA TOWER**, a centrally located commercial cum residential project, was erected in Joda (District: Keonjhar, Odisha) Year 2011 was even more promising. That year the Company launched three premium properties.

PANCHAWATI TOWER, a multi-storied building covering 55000 sq ft, in Barbil.

PEARL HEIGHTS, a consortium of 48 lavishly laid flats, and **SAHEJ SUCCESS**, a commercial project, in the Steel City of Rourkela. Currently, the Group is on the verge of unveiling two more premium residential projects, one in Andharua and the other in Govindpur (Bhubaneswar, Odisha).

GURUKUL GRANDEUR is one of the first projects of the Group in Kolkata. With a fine presence in the entire East Gurukul is now extending its presence in Kolkata with a number of notable projects followed by **GURUKUL GRANDE** and **GURUKUL LAKEVIEW**.